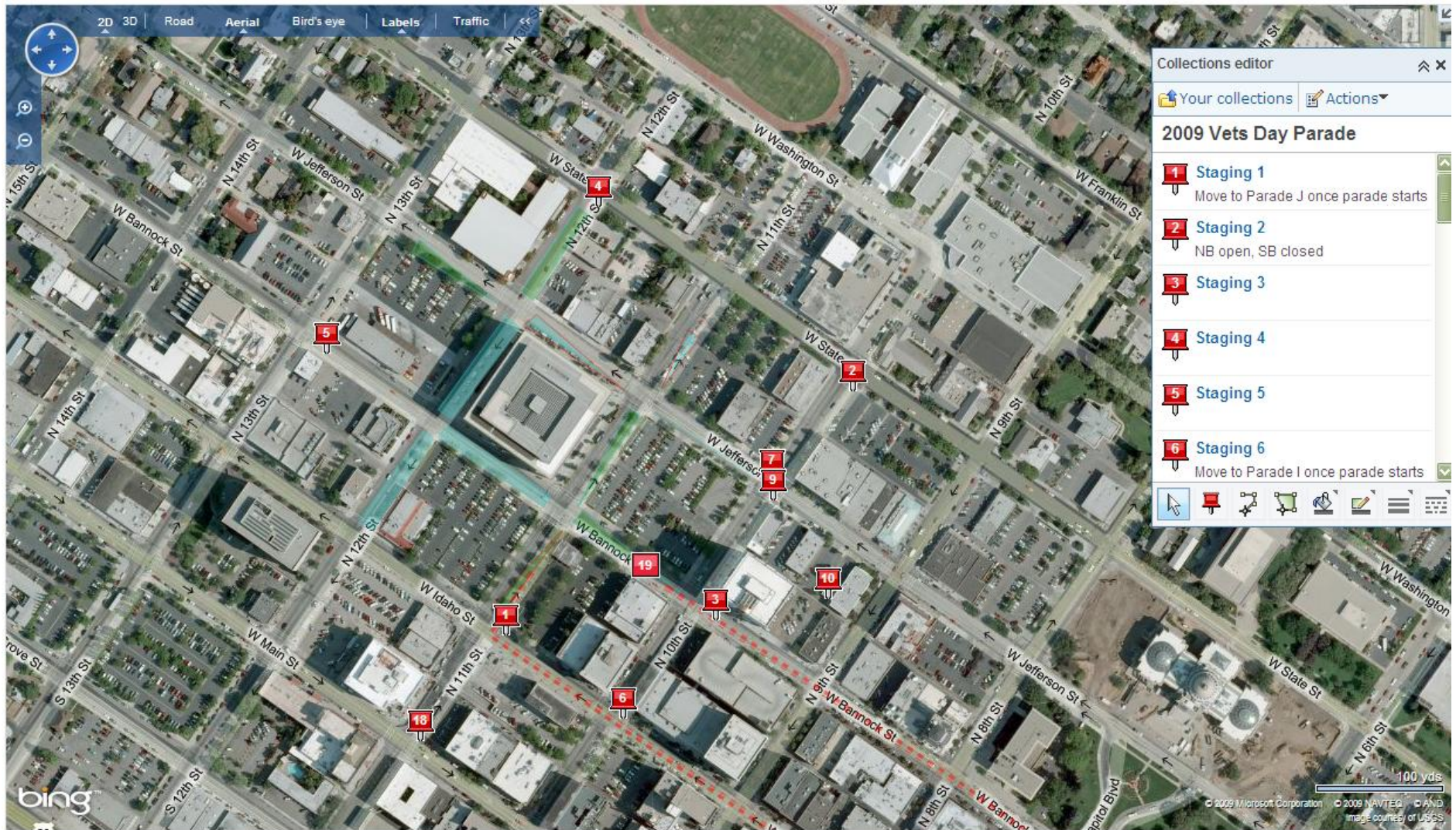


STAGING AREA – CLOSURE AT 0745



Closure 1 – Intake for staging for NB 11th at Idaho/prevent regular traffic from entering staging on NB 11th

Closure 2 – Prevent SB traffic on 10th at State /allow egress NB

Closure 3 – Close Bannock WB at 10th

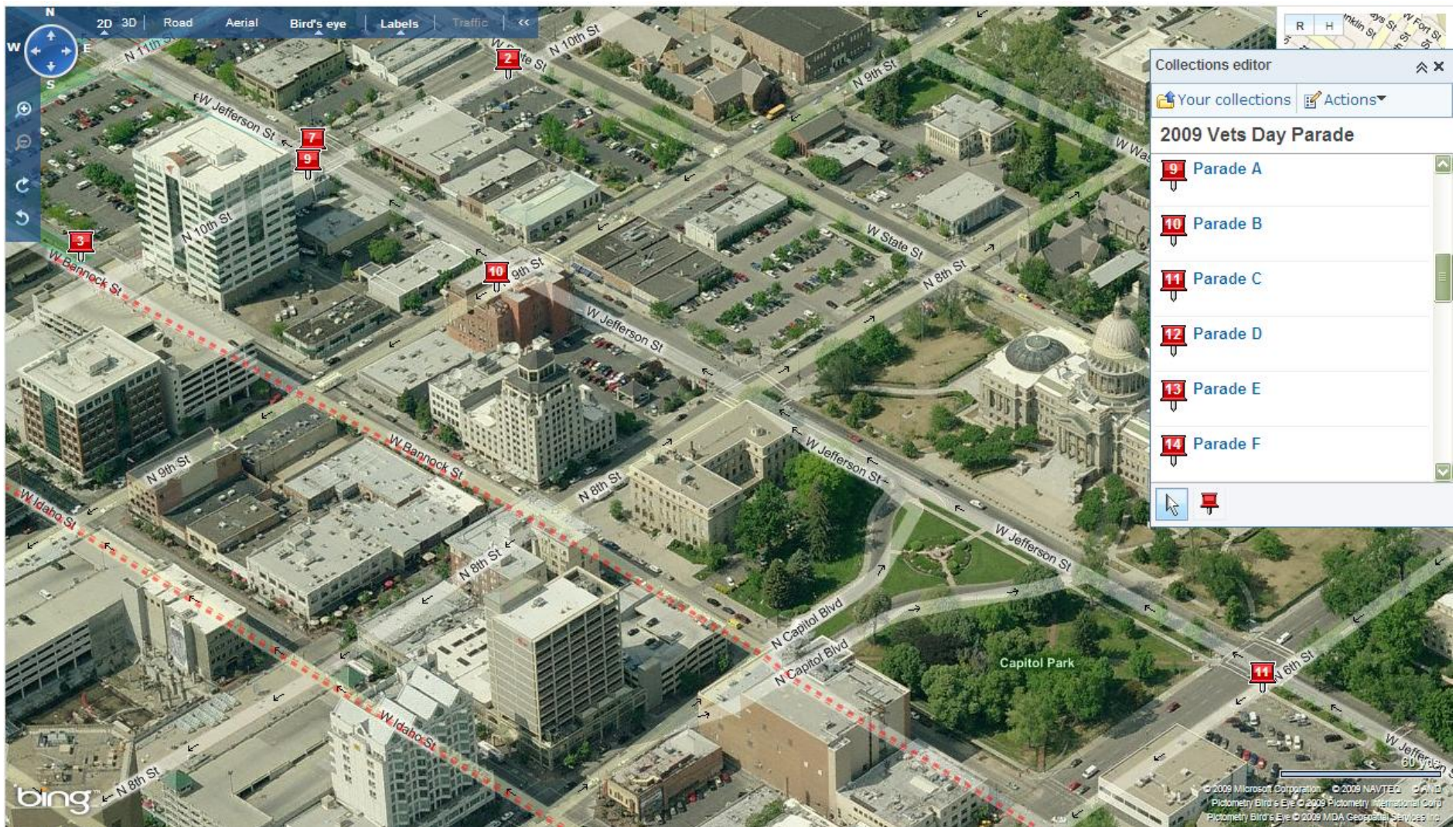
Closure 4 – Close 12th SB at State

Closure 5 – Close Bannock EB at 13th and prevent bus station from going EB

Closure 6 – Close NB 10th at Idaho

Closure 7 – Close Jefferson WB at 10th/direct WB traffic to NB 10th to exit on to State

PARADE CLOSURE – NORTH END – CLOSURE AT 0945



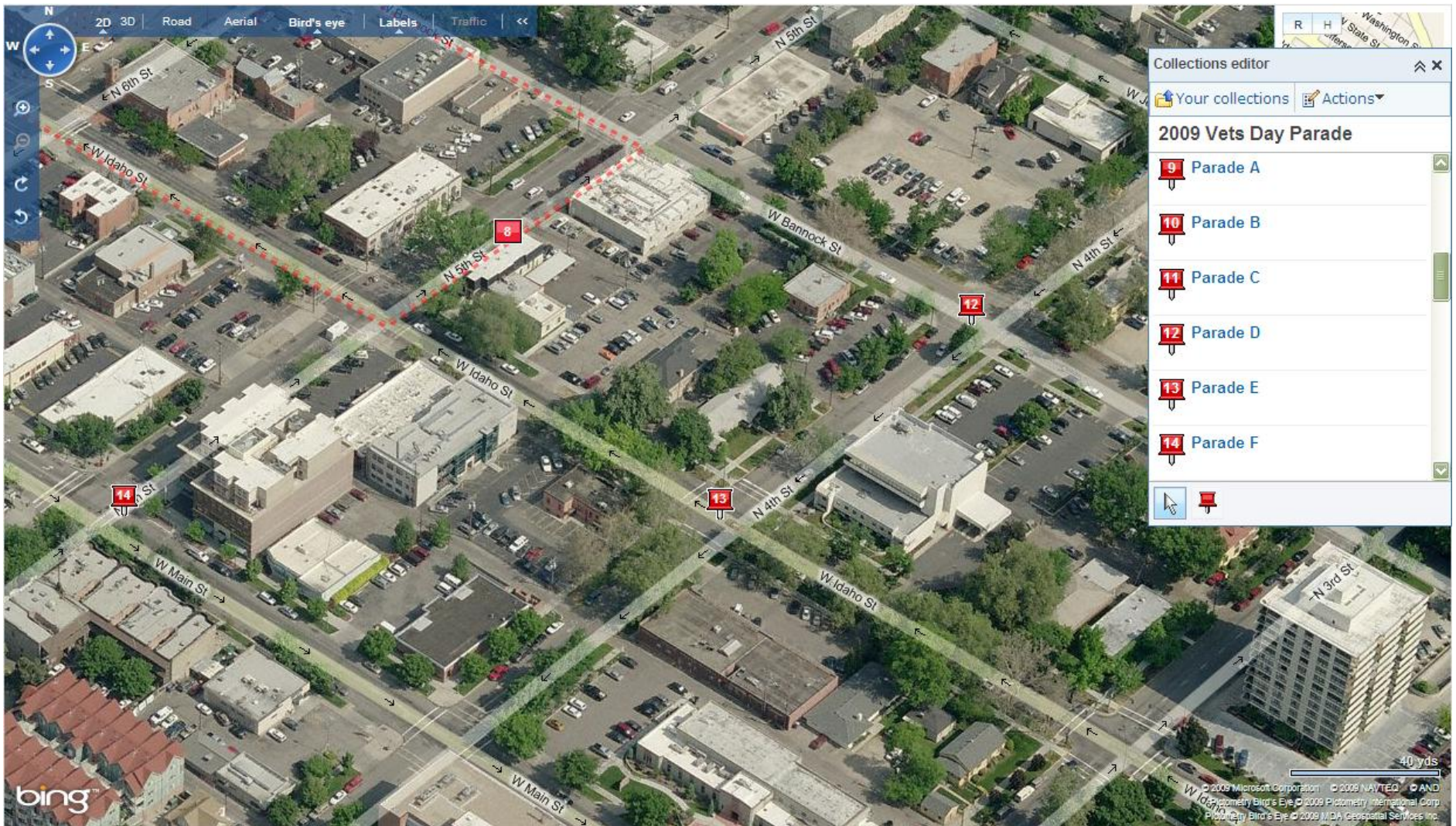
Lost Drivers: Redirect southbound traffic north to State, east to 4th St and then to Front to bypass parade

Closure 9 (A) – Close SB 10th at Jefferson

Closure 10 (B) – Close SB 9th at Jefferson

Closure 11 (C) – Close SB 6th at Jefferson

PARADE CLOSURE – EAST END – CLOSURE AT 0945



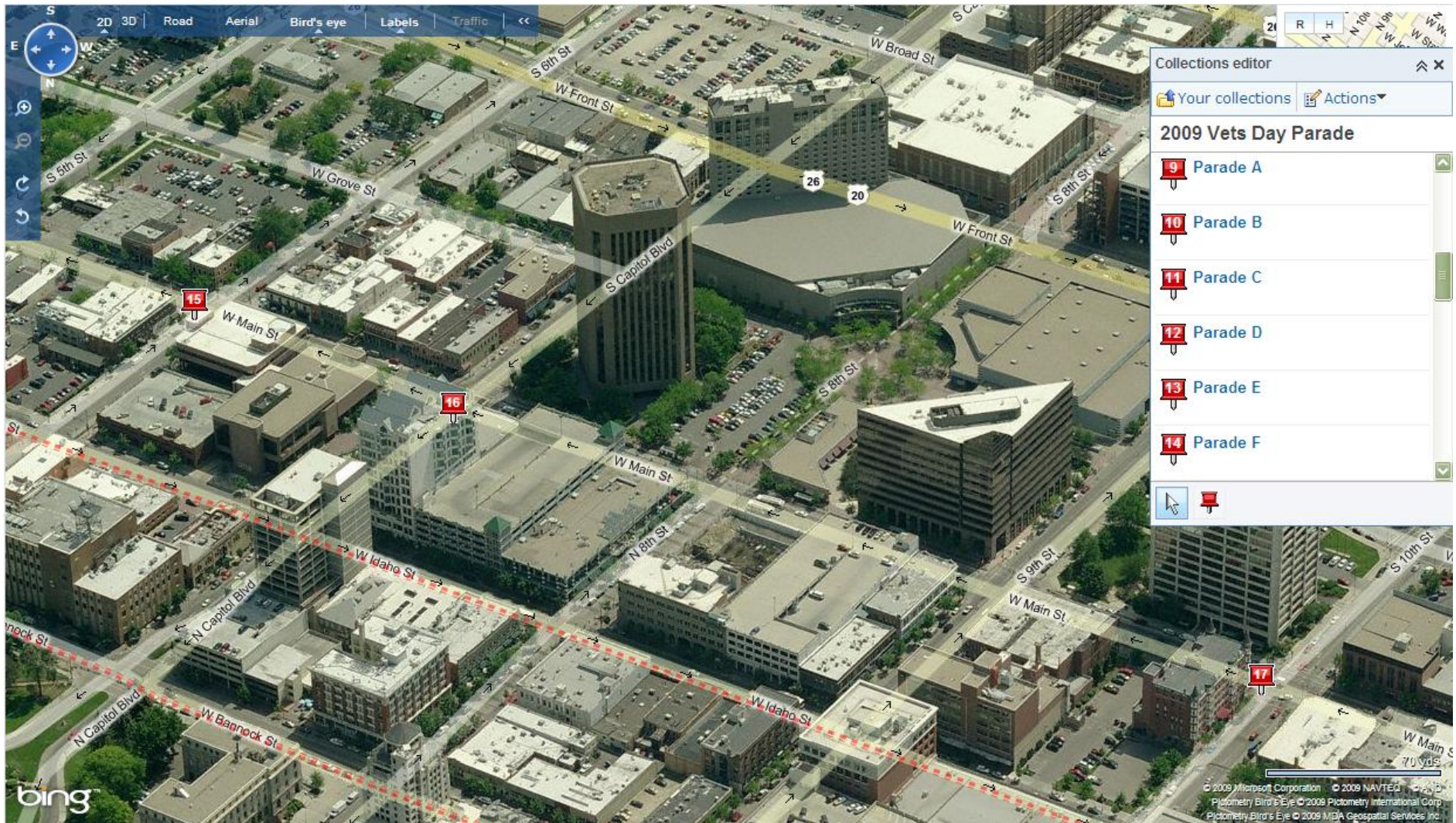
Lost Drivers: Redirect eastbound traffic north to State or south to Front to bypass parade

Closure 12 (D) – Close EB Bannock at 4th

Closure 13 (E) – Close EB Idaho at 4th

Closure 14 (F) – Close NB 5th at Main

PARADE CLOSURE – SOUTH END – CLOSURE AT 0945



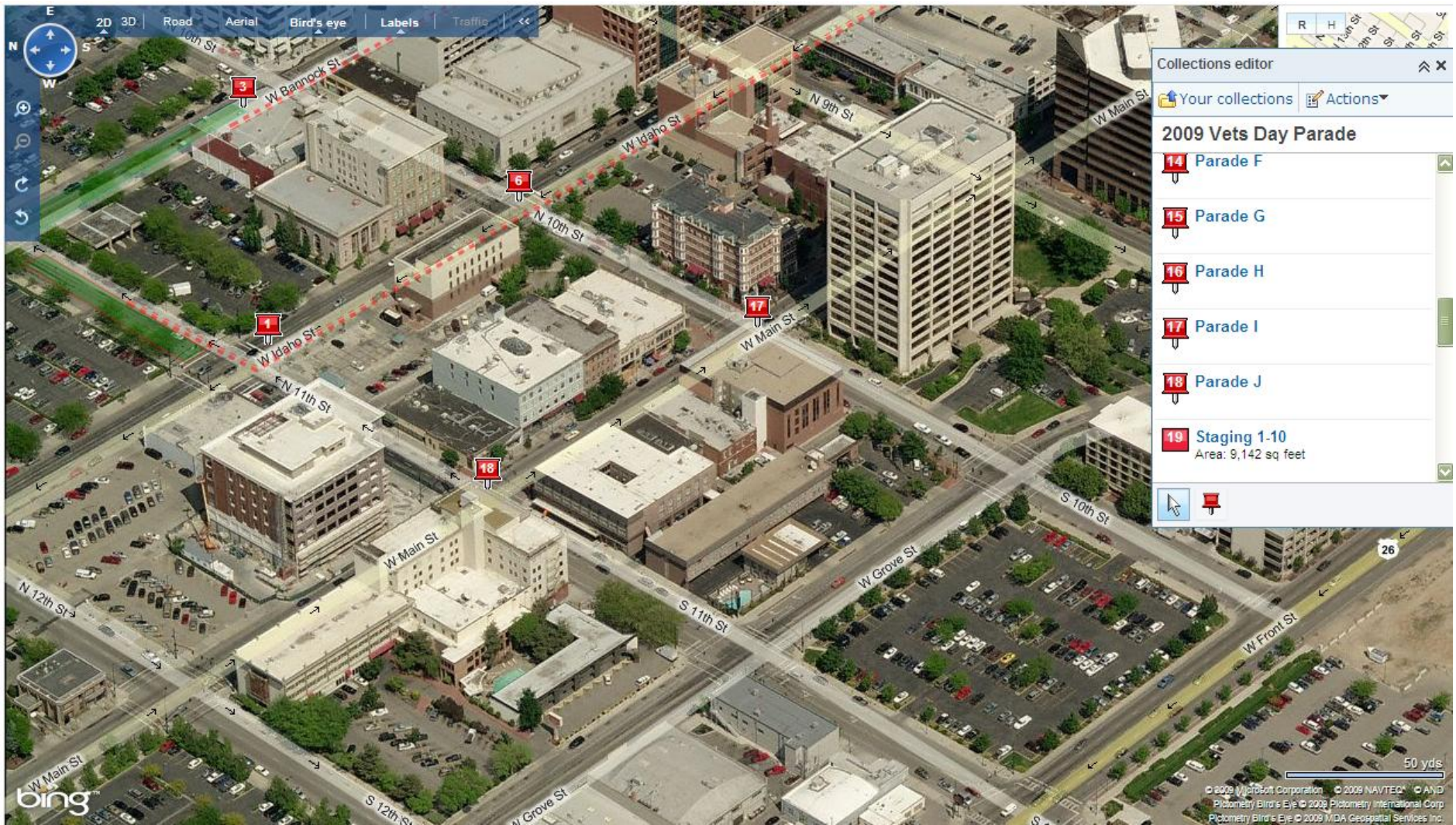
Lost Drivers: Redirect northbound traffic east to 3rd or west to 13th to bypass parade

Closure 15 (G) – Close NB 6th at Main

Closure 16 (H) – Close NB Capitol at Main

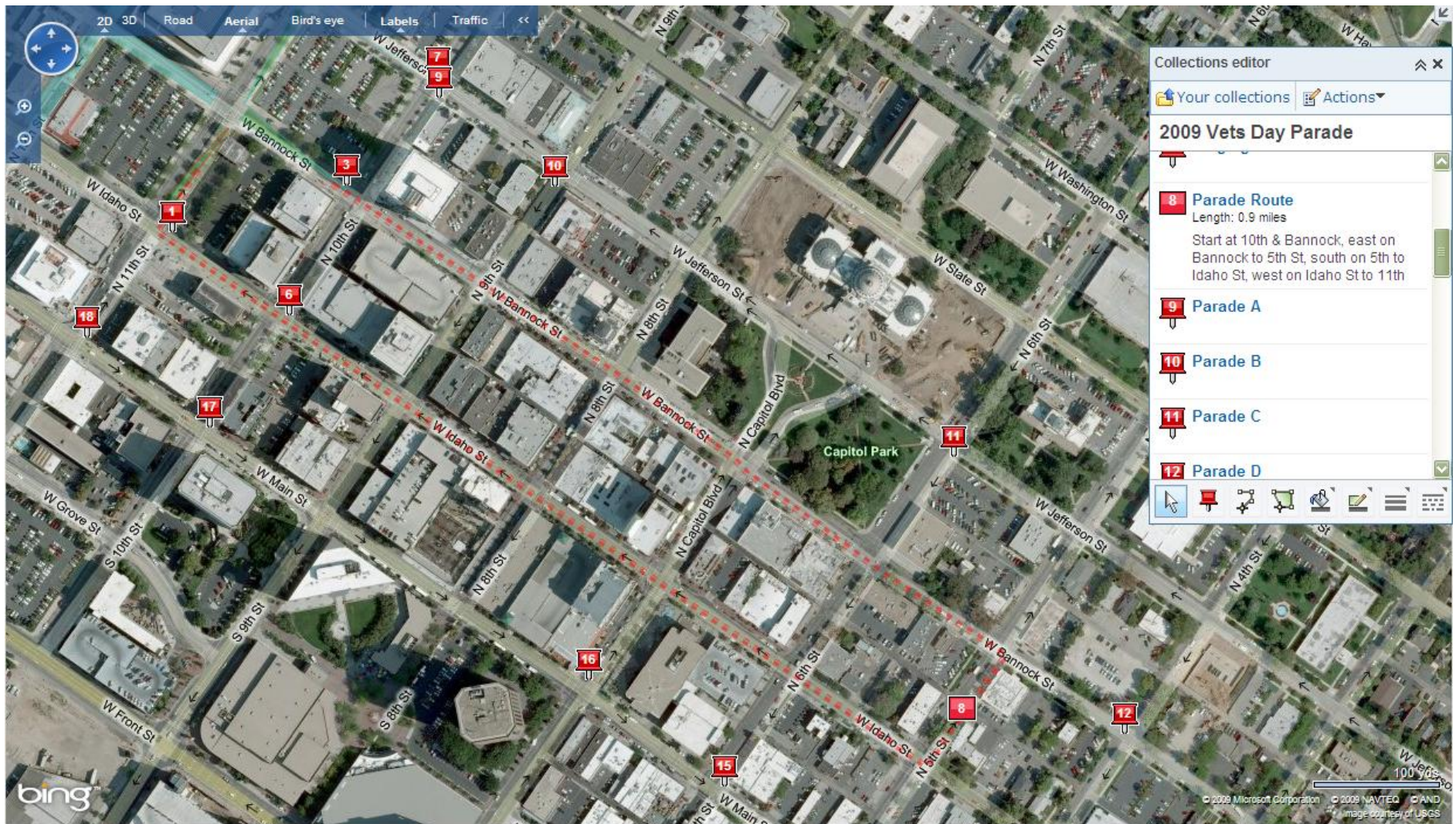
Closure 17 (I) – Close NB 10th at Main

PARADE CLOSURE – WEST END – CLOSURE AT 0945



Lost Drivers: Redirect northbound traffic east to 3rd or west to 13th to bypass parade
Closure 18 (J) – Close NB 11th at Main

PARADE ROUTE – PERIMETER CLOSURE AT 0945 – PARADE STARTS AT 1000



Parade Route – Starts on Bannock at 10th, going eastbound on Bannock to 5th St then bearing to the right on to southbound 5th St then bearing to the right on to Idaho St westbound until turning right on to 11th St at the end of the route.

*****ALL CLOSURES MUST REMAIN CLOSED UNTIL RELEASED BY BOISE PD*****

Do not reopen an intersection after the parade has passed your location – the entire perimeter must remain intact until all floats are completely off of the parade route.